

# Security challenges in building Britain's new high speed railway

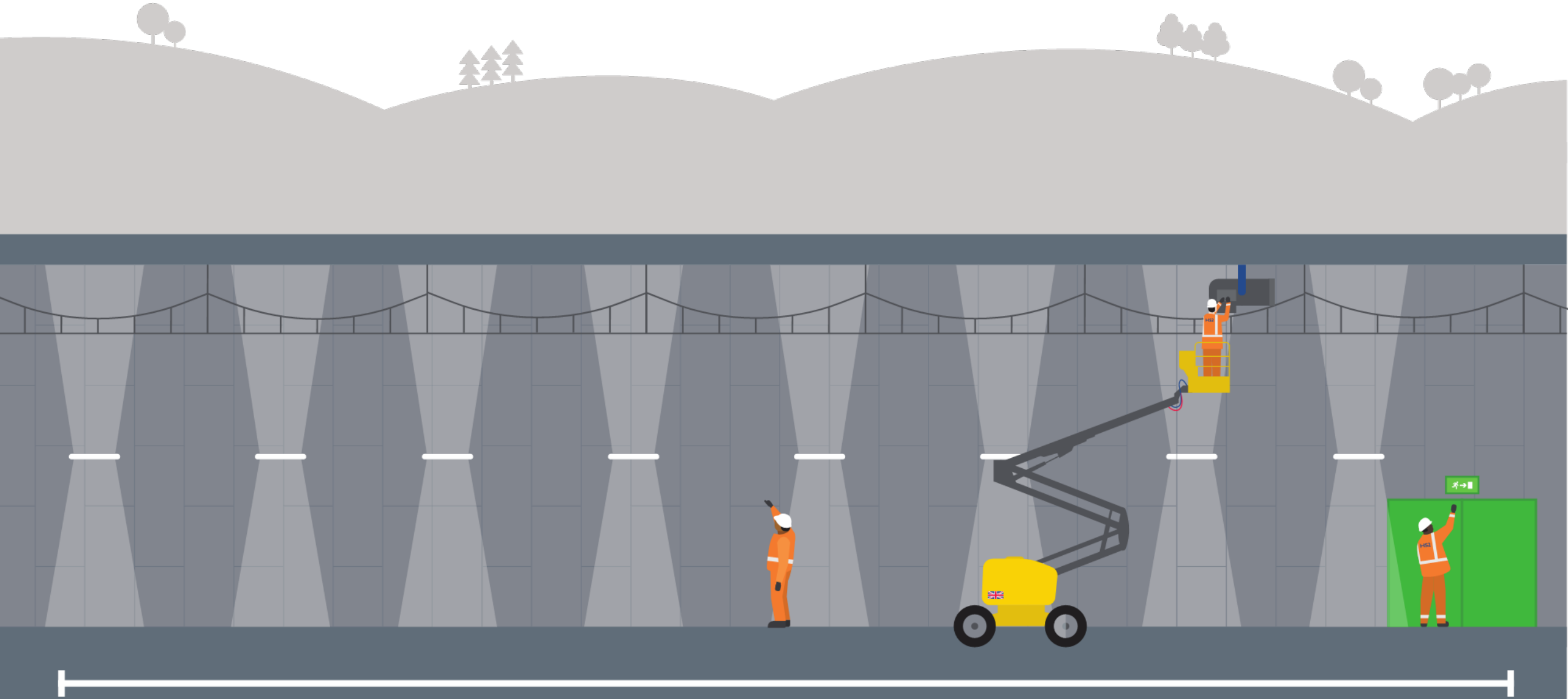
# HS2

Richard Jordan

Chief Security and Resilience Officer, HS2 Ltd



# Introduction to HS2

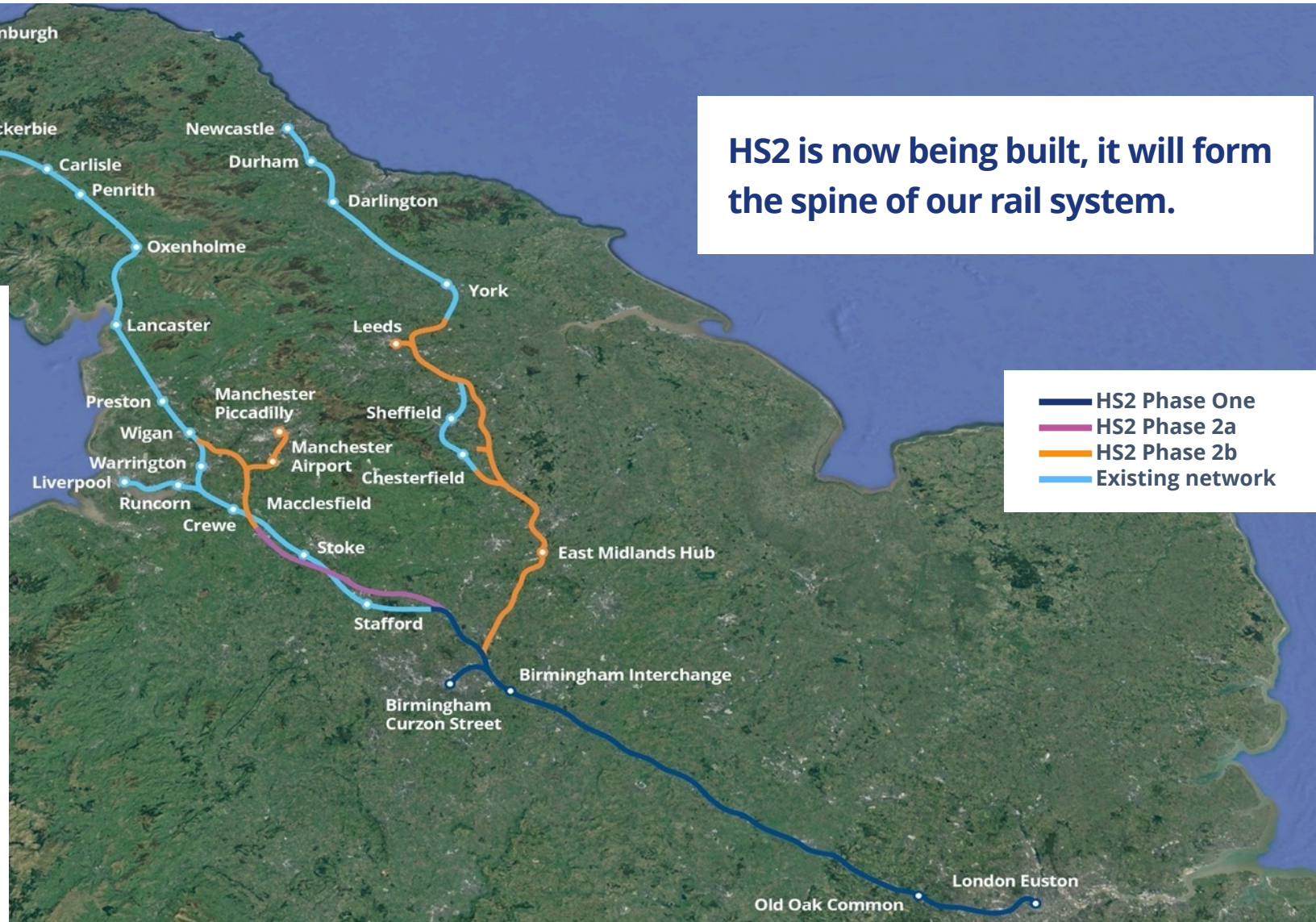


# Bringing Britain closer together

## Key facts

- 345 miles of brand new high speed track will connect Birmingham, Manchester, Leeds and London.
- HS2 trains will also run on the existing network, serving towns and cities in the North West, North East and Scotland.
- HS2 will connect 30 million people and 8 of our largest cities, with 25 stops from Scotland to the South East.

HS2 is now being built, it will form the spine of our rail system.



# Why Britain needs HS2

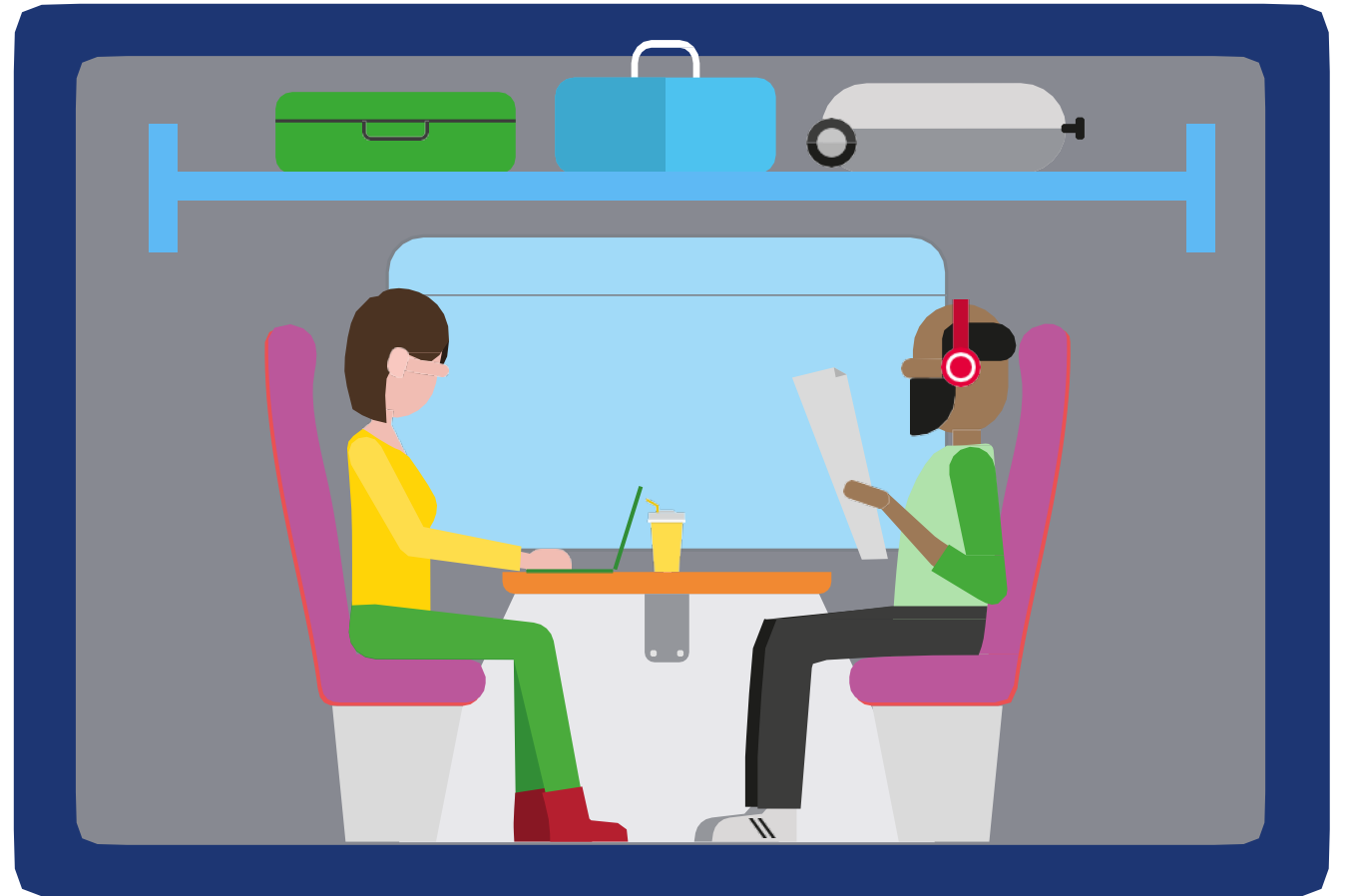
More capacity,  
cutting carbon and  
better connectivity.

# HS2



# Capacity: Fixing our railways

HS2 will carry over 300,000 passengers a day. Putting long distance services on our brand new track will take pressure off the existing network, adding **vital capacity** for **more local, commuter** and **freight services**.



# Carbon: Our cleaner, greener future

HS2 will be the **low carbon alternative** for long distance travel and will support the transition to a **net zero carbon economy** in the UK by 2050.



# Connectivity: More within reach

By bringing Britain closer together, there will be **more investment** in the Midlands and the North as areas regenerate and businesses expand.

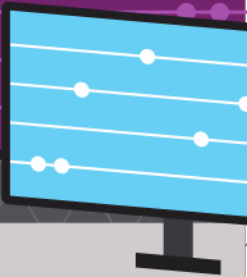
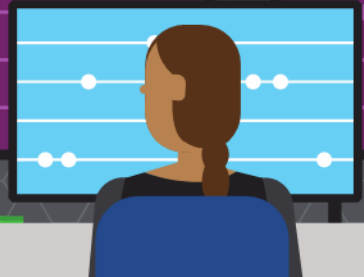
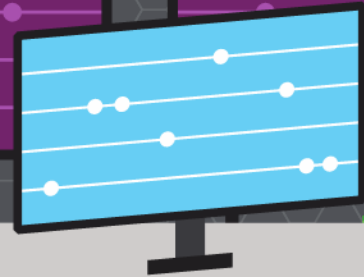
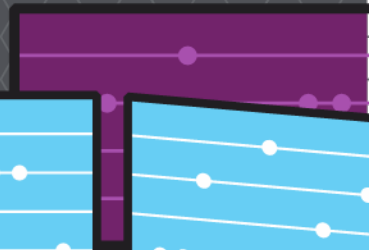
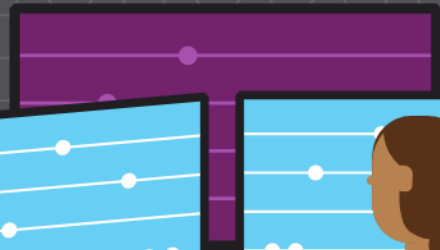
HS2 will **open up opportunities** for millions of people.



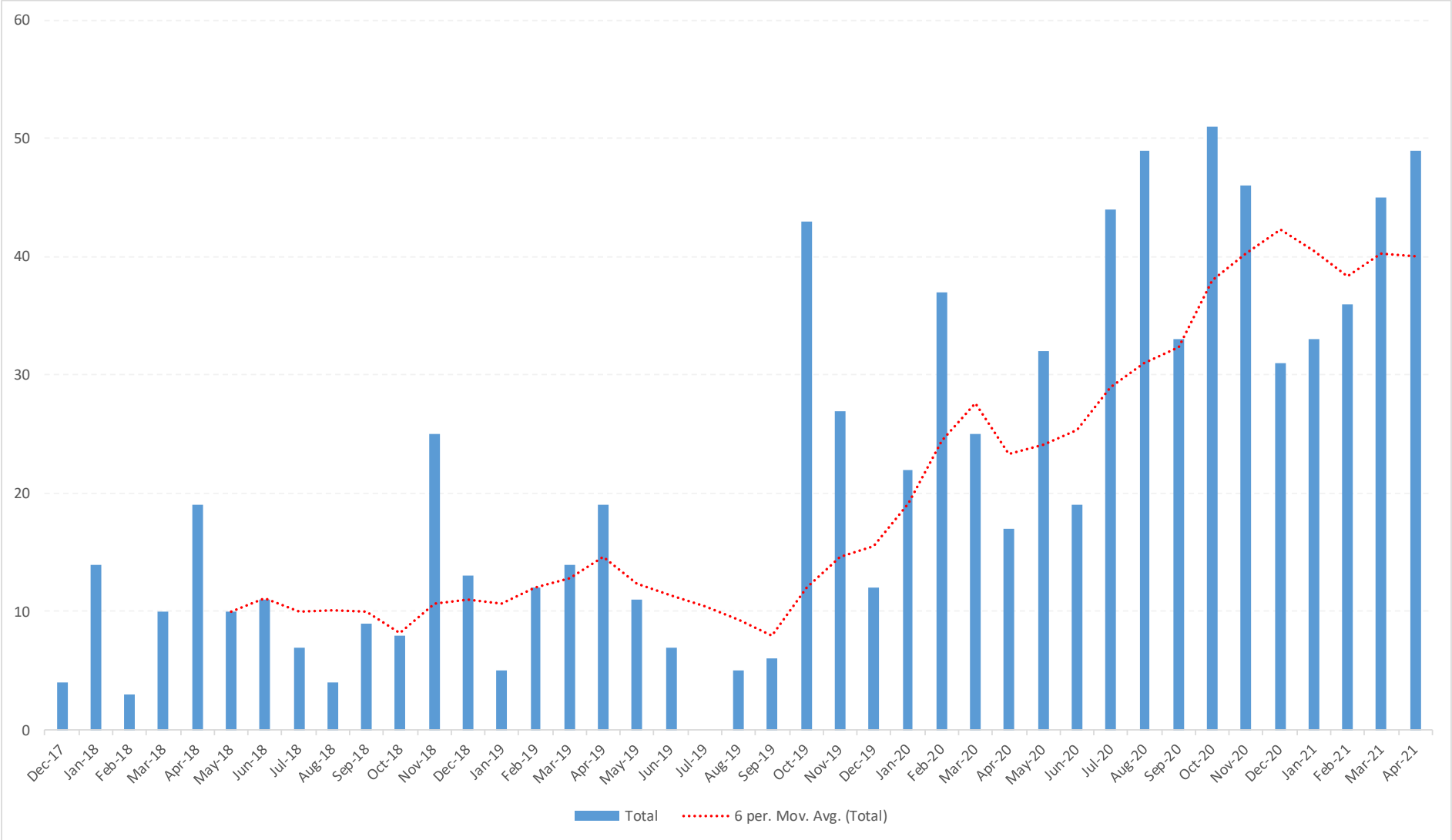
● Currently within an hour      ● Within an hour with HS2

# Security challenges in building HS2

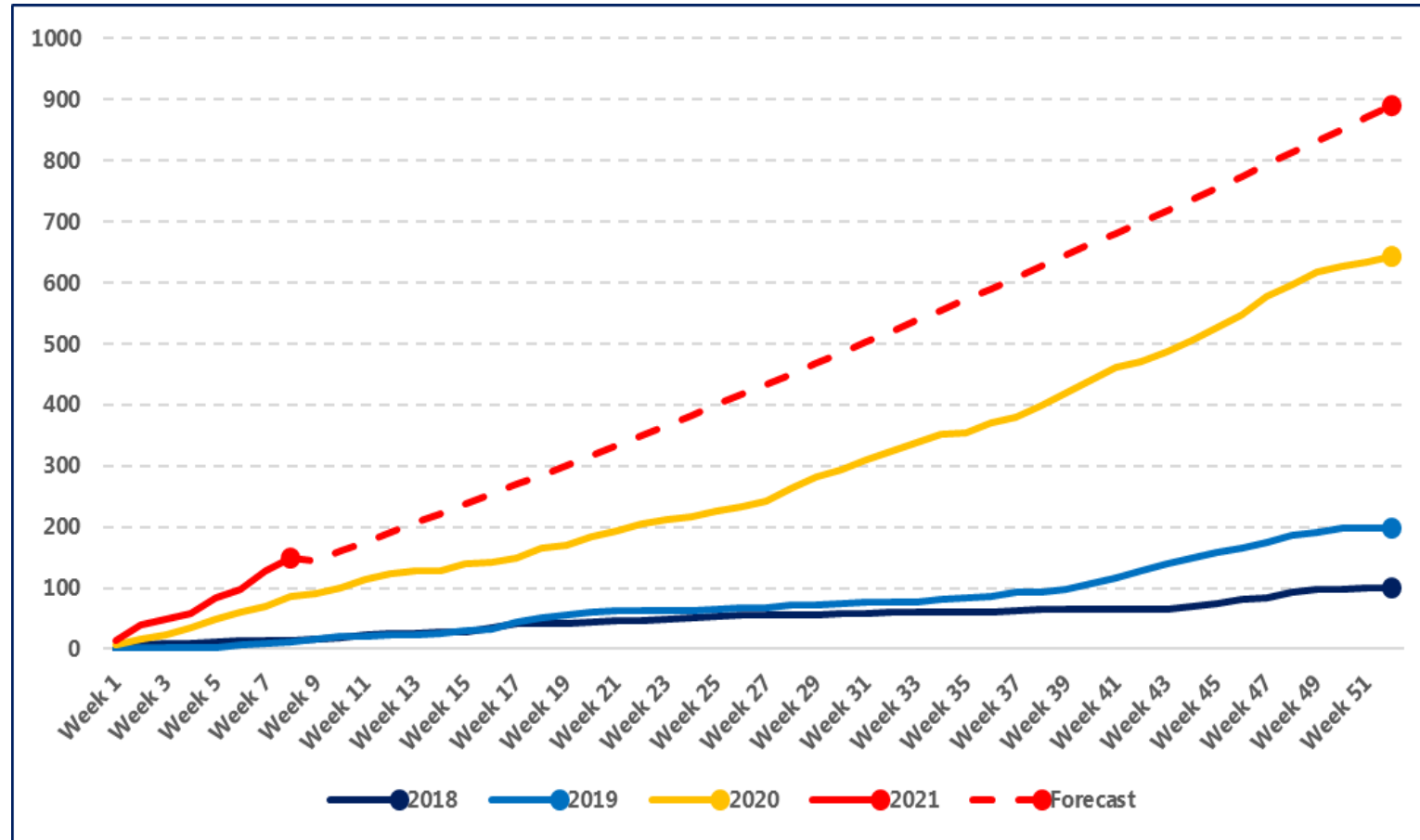
Security challenges



# Incidents of trespass and protest



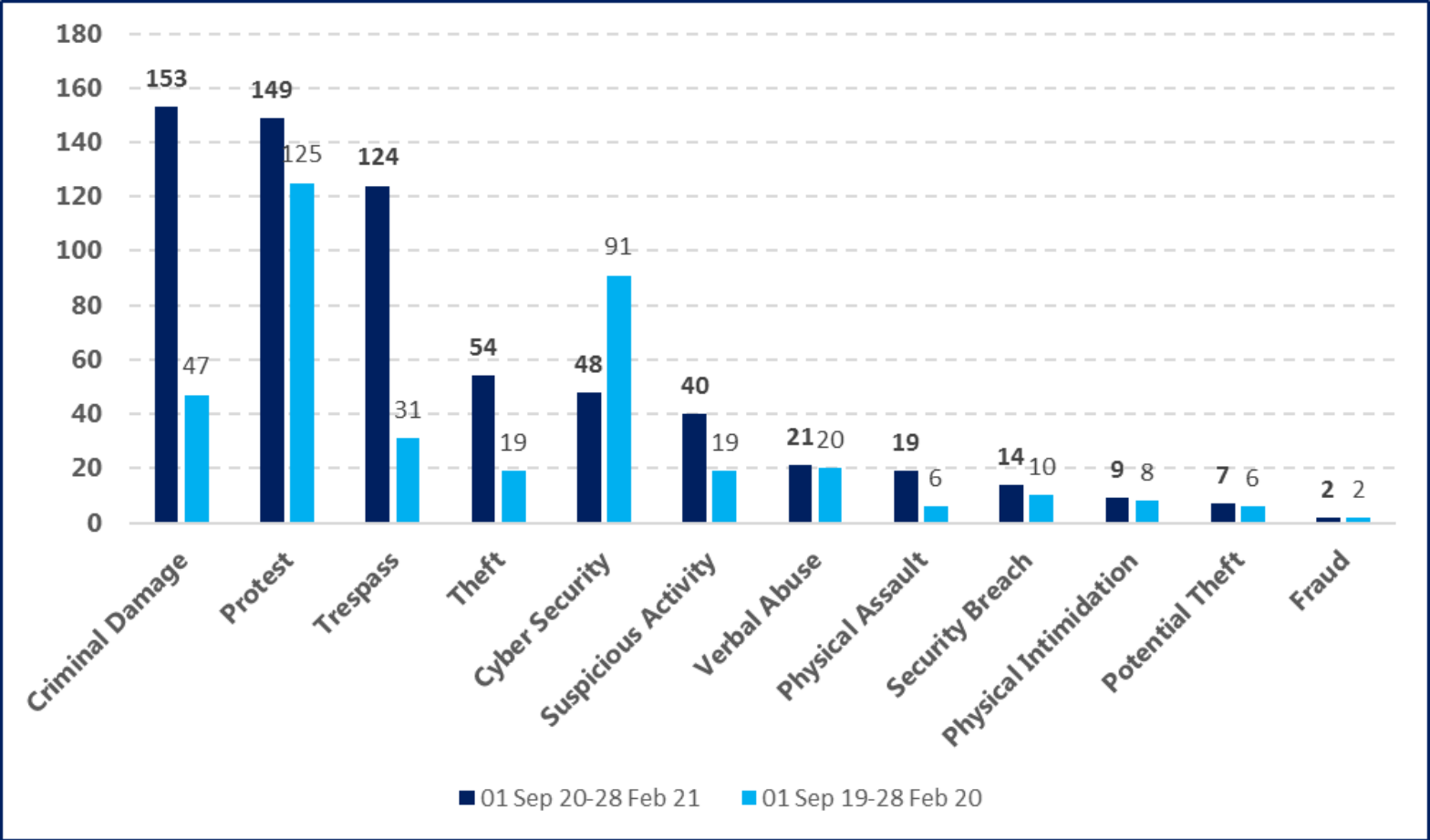
# Year on year increase in protest against HS2



Cumulative Year-on-Year HS2 Protest-Related Reports – Including Projected Figures for 2021

Clear evidence of a year-on-year increase

# Escalation of violence and crime



A comparison of the same 6 month periods in 2019-2020 and 2020-2021 shows increases as follows:

- Criminal Damage **+226%**
- Trespass **+300%**
- Theft **+184%**
- Physical assault **+216%**

# Escalation in tactics and violence



DEC 2020 – Denham Country Park



JAN – MAR 2021 – Euston



FEB 2021 – Poors Piece



MAR 2021 – A413 Wendover



APR 2021 – A41 Wendover



MAY 2021 – Podium

Examples:

- 2 HS2 led evictions that have been taken over by the Police due to levels of resistance and violence
- Significant lock on devices containing exploding cannisters with glass and metal shards designed to cause harm
- Catapulting of rocks and golf balls
- Protesters observed with knives and scissors
- Lasers being shone in workers eyes causing temporary loss of sight
- Perforated eardrum and potential permanent damage from a megaphone used by a protester
- £30,000 damage at Podium

**An extremely contentious possession is planned at Small Dean, Wendover which may act as a trigger point for more violence**

# Euston tunnel protest - overview





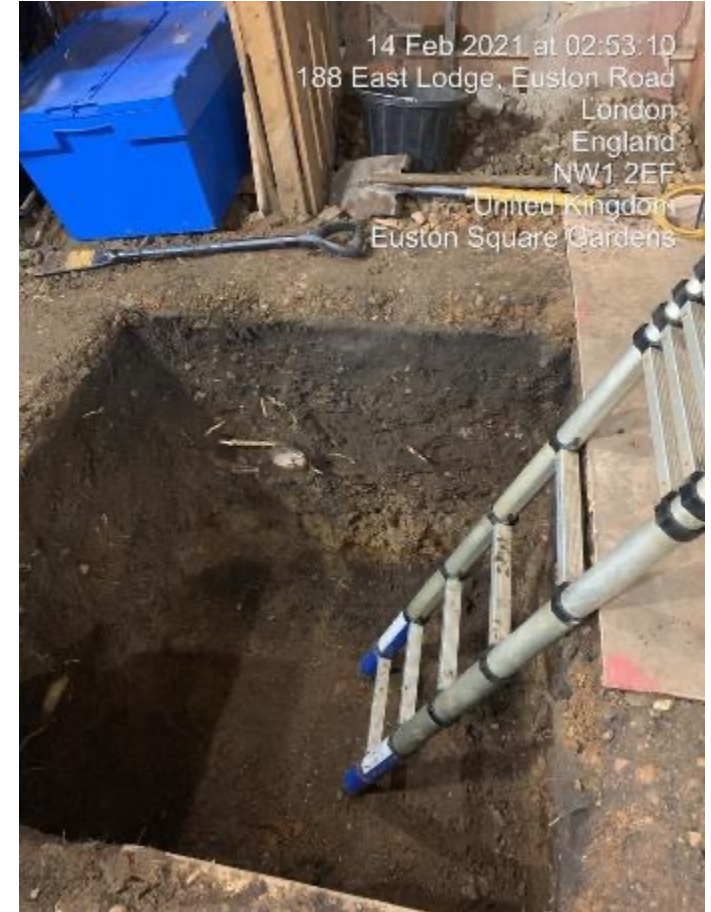
# Examples of protestor shoring chamber 1



# Chamber 1 Stabilising the roof



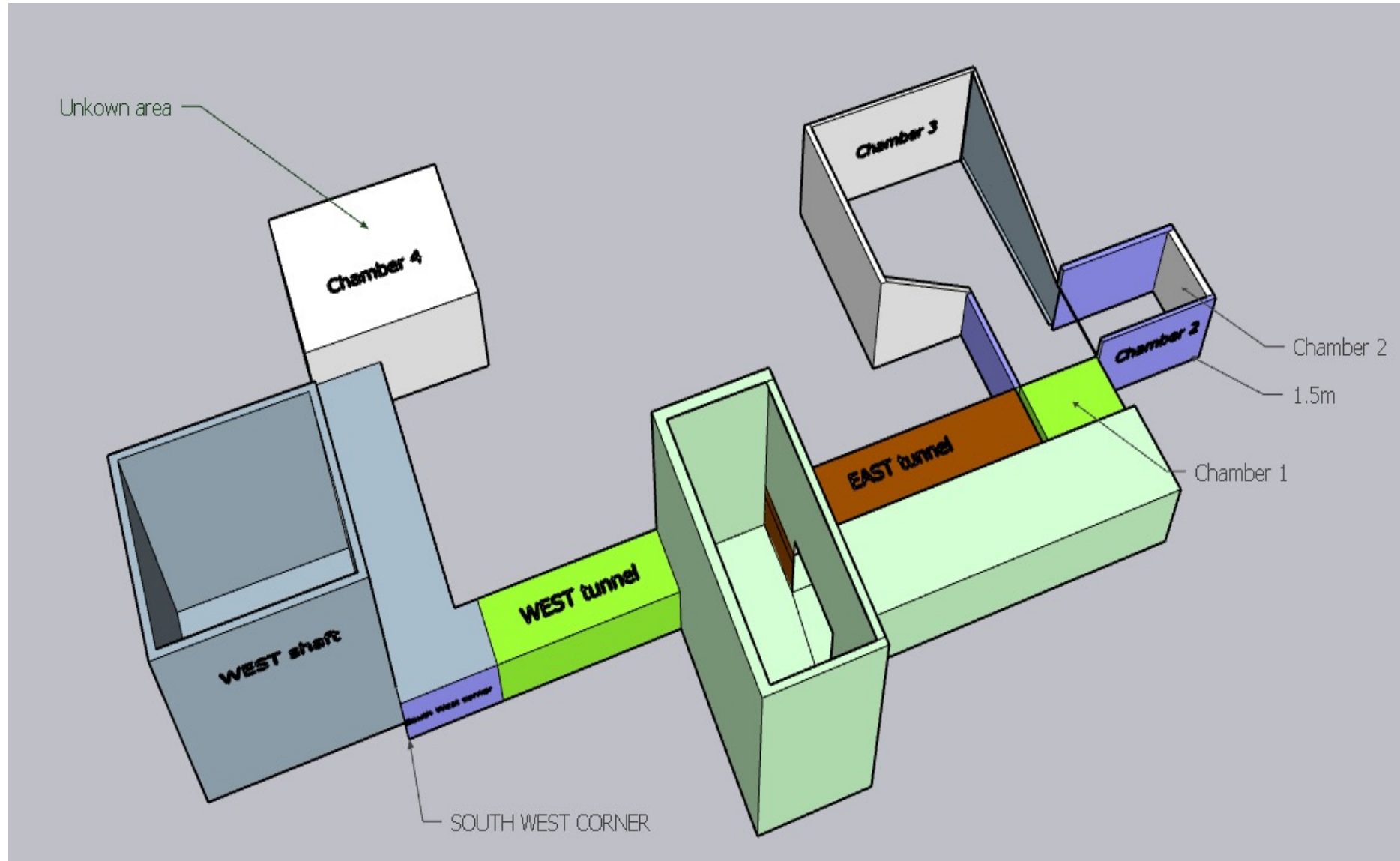
# Shaft 3



# Shaft 3

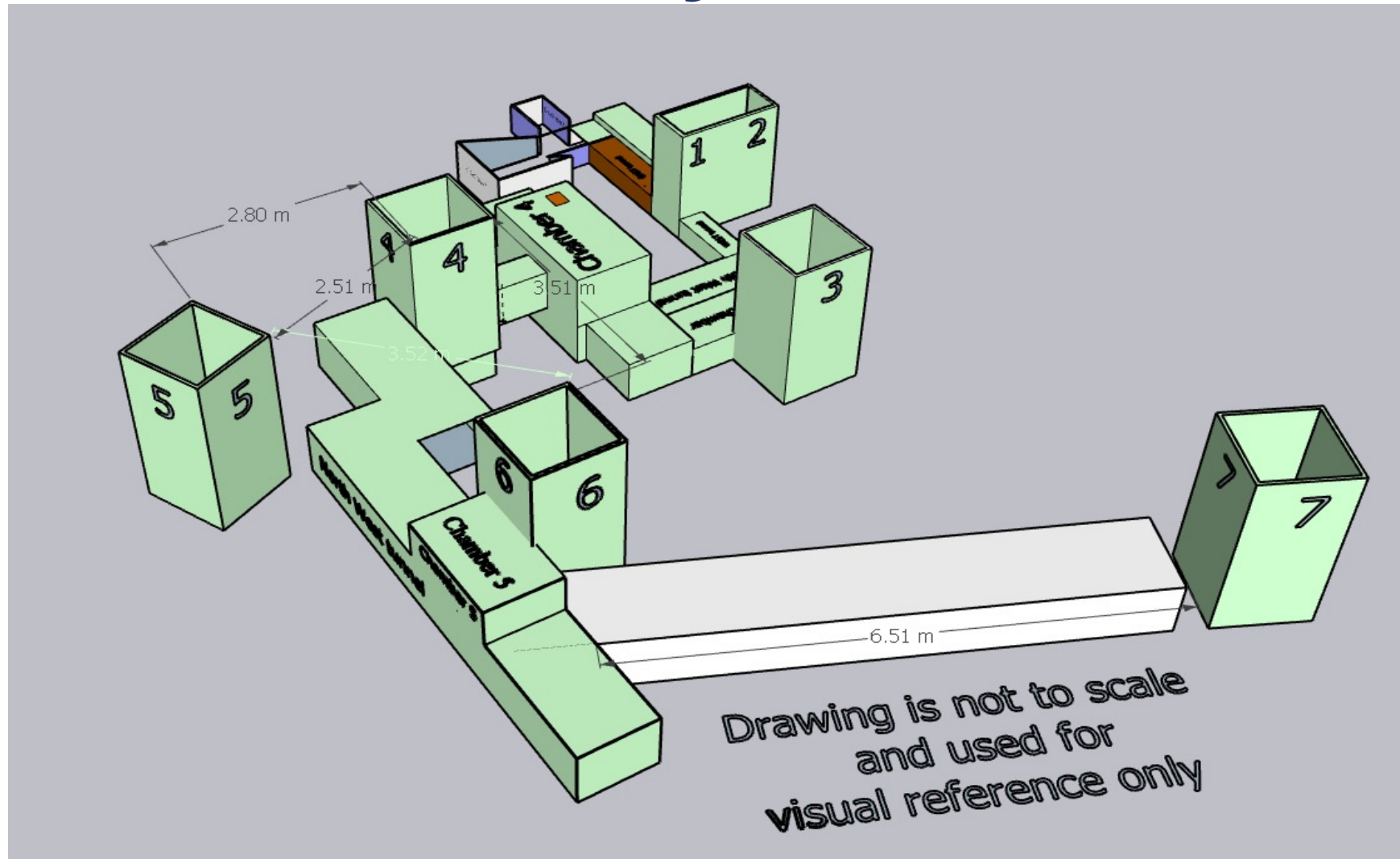


# Initial known area



Surface marking  
S

# Layout



# Protest now, theft next

Home / Security & Access Control / UK Construction Site Theft Costs £800 Million a Year

Security & Access Control

## UK Construction Site Theft Costs £800 Million a Year



1 minute read



The UK construction industry is a multi-million pound industry – and that's just its losses! Seriously, latest statistics from insurer Allianz Cornhill recently revealed that theft alone costs the industry £800M a year. So how is this a concern for the industry and the communities they serve?

## HS2 blamed for materials shortages

30 Apr Major projects like HS2 are soaking up all available building materials, leaving not enough left for ordinary works, according to one of the UK's biggest construction employers.



The lack of building materials has now reached crisis level, it is being said, and has overtaken skills shortages as the number one risk to the recovery of the construction industry.

This is what Hudson Contract is hearing from its far-reaching network. Hudson Contract is a payroll firm that manages the wages of more than 30,000 construction workers on its books and supplies more than 2,500 construction companies across England and Wales.

Hudson Contract says that the materials problem is most acute in the West Midlands where there is significant house-building activity as well as major infrastructure projects including new stations for high-speed rail and facilities for the 2022 Commonwealth Games in Birmingham.

Managing director Ian Anfield said: "Our clients are reporting serious shortages in construction products on the ground. In the West Midlands,

some are saying their projects are now on 'tick over' because materials are being creamed off by HS2.

"The government is proceeding with mega-projects and pushing forward shovel-ready schemes to 'build back better', the housing market is overheated due to the stamp duty holiday and demand for lumber is soaring around the world.

HS2 will account for 4% of all construction in the UK  
Our share of that £800M could be £32M a year for 20 years

# Protest now, theft next

HS2 Security Alerts: Possible Reconnaissance for Acquisitive Crime

Fri 04/06/2021 10:46  
HS2 Security Alerts <noreply@everbridge.net>  
HS2 Security Alerts: Possible Reconnaissance for Acquisitive Crime

To Richard Jordan



Two reports have been received in the last 24 hours that are indicative of reconnaissance for acquisitive crime, be that theft of plant and machinery, metal or other items

Acquisitive crime is a nationwide issue and is very common, and a national police taskforce has been set up to coordinate the fight against these types of criminals - Operation Opal

If you observe suspicious individuals at your place of work or encounter people trying to gain access to sites without having booked in prior, please report to the local police by calling 101 and reference Operation Opal if you believe theft to be the motive

Manage your subscriptions via the [HS2 Alerts Portal](#).

This message has been sent from the HS2 Alerts system

HS2 Security Alerts: Theft of Plant Machinery

Wed 16/06/2021 11:15  
HS2 Security Alerts <noreply@everbridge.net>  
HS2 Security Alerts: Theft of Plant Machinery

To Richard Jordan



A rural site was recently targeted by thieves who stole a very expensive piece of plant machinery in what appears to have been a planned attack, with the thieves entering the site in a vehicle by smashing through the fence from a neighbouring field to avoid being detected by security at the entrance

Although this is a single instance of theft, plant machinery and metal and some of the most frequently stolen items of high value in the UK, with the theft and disposal being conducted by serious organised crime groups operating across Europe and beyond, as well as by local acquisitive criminals

Theft of plant machinery and metal should not be viewed as single isolated incidents, but as part of a wider issue that if not deterred will become more prevalent - report losses to the police by calling 101

It is worth noting that opportunities to steal plant machinery are also opportunities for anarchists and environmental activists to conduct sabotage and vandalism

Manage your subscriptions via the [HS2 Alerts Portal](#).

This message has been sent from the HS2 Alerts system

# What are we doing about it?

Operation Rocket / data driven approach

Op Rocket - Joint HS2 / BTP Intelligence Coordination Unit

Routewide perimeter security vulnerability assessment

Operational assurance that supply chain are meeting our contracted standards

## How can you get involved?

HS2 Ltd holds an annual 'Meet the contractor' event -

<https://www.hs2.org.uk/mtc2020/>

Email our Supply Chain Communications team to register your interest -

[scc@hs2.org.uk](mailto:scc@hs2.org.uk)

Check out our contract opportunities - <https://www.competefor.com/hs2/>

---

# Questions?

# HS2

