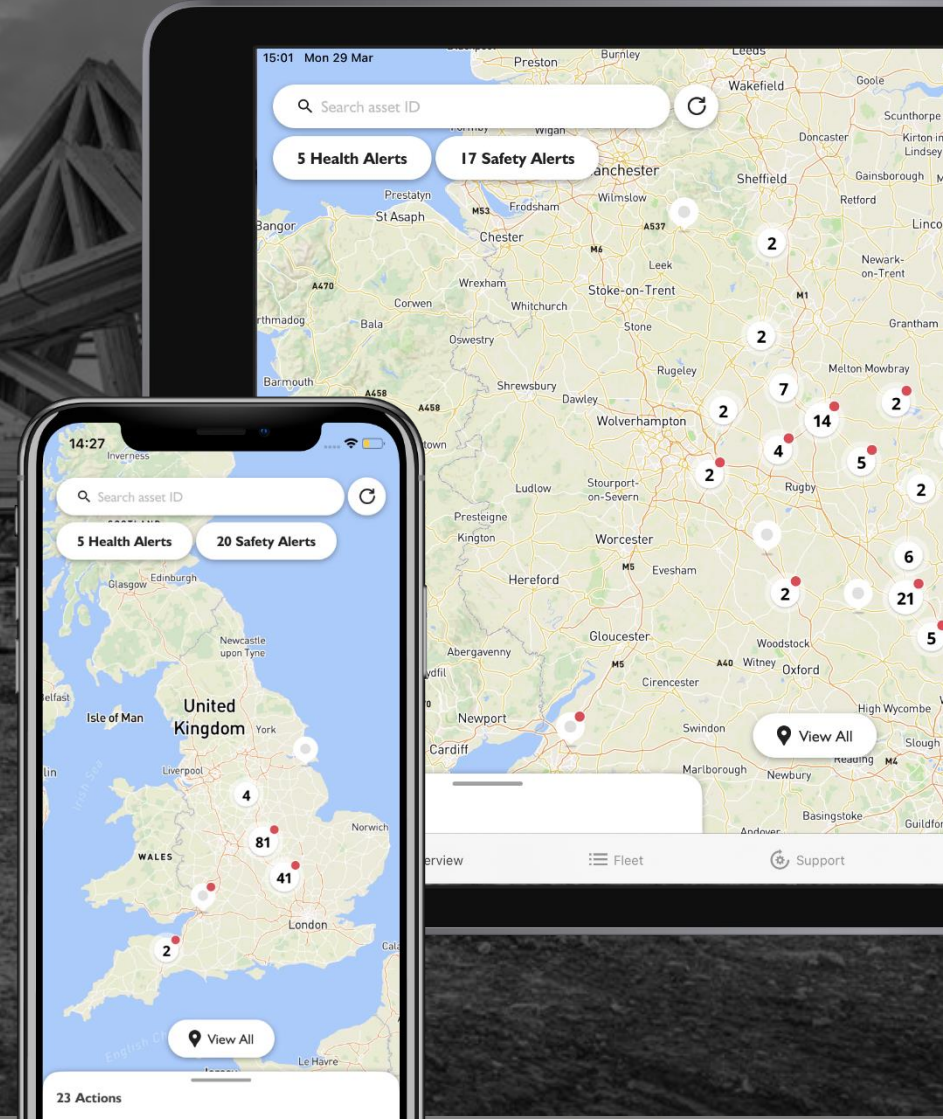




**INCREASE UPTIME.**  
**REDUCE ADMIN.**  
**MAKE BETTER DECISIONS.**



# 2007 - Connecting to a machine

**LIVE LINK**

**LIVE LINK**

Satellite technology giving down-to-earth machine management benefits

**JCB**  
A Product of Hard Work

**LIVE LINK**

Home | Machines | Notifications | Reports | Admin

Current map centre Latitude: 52.5008, Longitude: -2.0094

All Landmarks  
 Dealer location  
 Jobsite

**JCB** Overview Machines Notifications Reports Admin

Signed in: David Midgley

GS7 - 1650178 : Arrived - Avonmouth STW : 02/03/2010 15:58 1 of 2

Notification	Machine	Time	Location
Arrived	GS7 - 1650178	02/03/2010 15:58	Lawrence Weston Rd,Ch...
Arrived	GS7 - 1650178	02/03/2010 15:55	St Georges Rd,Dorchester...

Default Today's Machine List

Machine	Engine Status	Engine Hours	Location
GS7 - 1650171	Off	12h 17m	Unknown
GS7 - 1650172	Off	3h 9m	A431,Bath,BA1 9,United Kingdom
GS7 - 1650173	Off	6h 10m	Unknown
GS7 - 1650174	Off	3h 23m	St Georges Rd,Dorchester,DT1 1,United Kingdom
GS7 - 1650175	Off	5h 3m	Unknown
GS7 - 1650176	Off	6h 28m	Flushing Headon,Yeovil,BA21 5,United Kingdom
GS7 - 1650177	Off	6h 55m	Unknown

Engine On Hours **8h 2m** Engine Off Hours **14d 11h 56m**

**LIVE LINK** Empower your business with JCB Livelink

**S**ERVICE

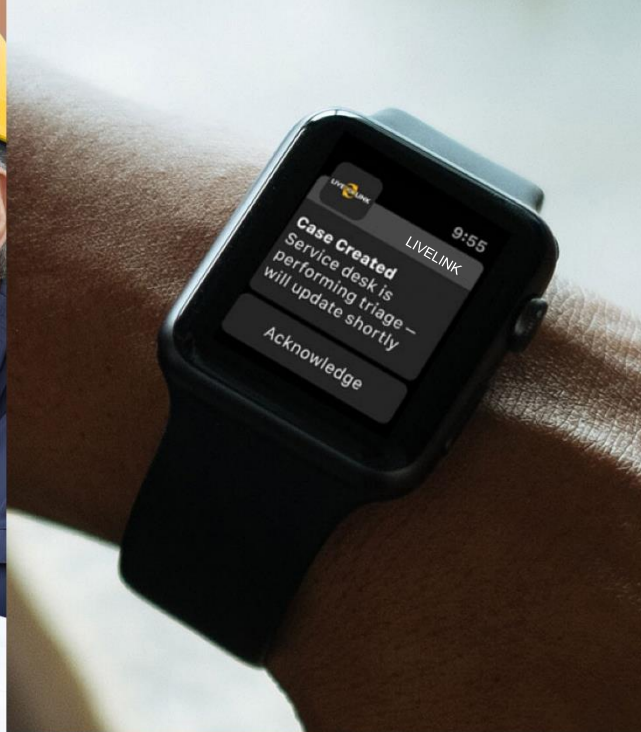
- SERVICE REMINDER
- MACHINE DATA BACKUP
- CRITICAL MACHINE HEALTH ALERTS

**O**PERATION

- FUEL LEVEL INFORMATION
- IDEAL TIME MONITORING
- ENGINE STATUS

**S**ECURITY

- GPRS TRACKING
- OPERATING HOURS
- GEO FENCING



## Connecting us to our customers

More than telematics.

LiveLink is our Concierge Service for every customer. It is their digital connection to their machine, their dealer and to JCB.

The platform empowers our customers to;

**INCREASE UPTIME.**

**REDUCE ADMIN.**

**MAKE BETTER DECISIONS.**



Case #234567

Today

**Livelinek** 9:03am  
Admin  
UPDATE - your case has now been escalated to your dealer.

**Beth Skelton** 9:05am  
JCB Dealer  
Hi Dave, initial triage has been performed and your case has been escalated to us. We will be touch in shortly to confirm an JCB Engineer visit.

**Dave Stocks** 9:07am  
Owner / Operator  
Hi Beth, Great, I'll await a further update.

**Beth Skelton** 9:08am  
Fleet Service Desk  
Hi Dave, we've checked availability and assigned JCB Engineer GARY to your case. He is currently on-route with the correct parts. ETA is 9:45am

**Dave Stocks** 9:08am  
Owner / Operator  
Hi Beth, OK, thanks for the update and we'll await his arrival.

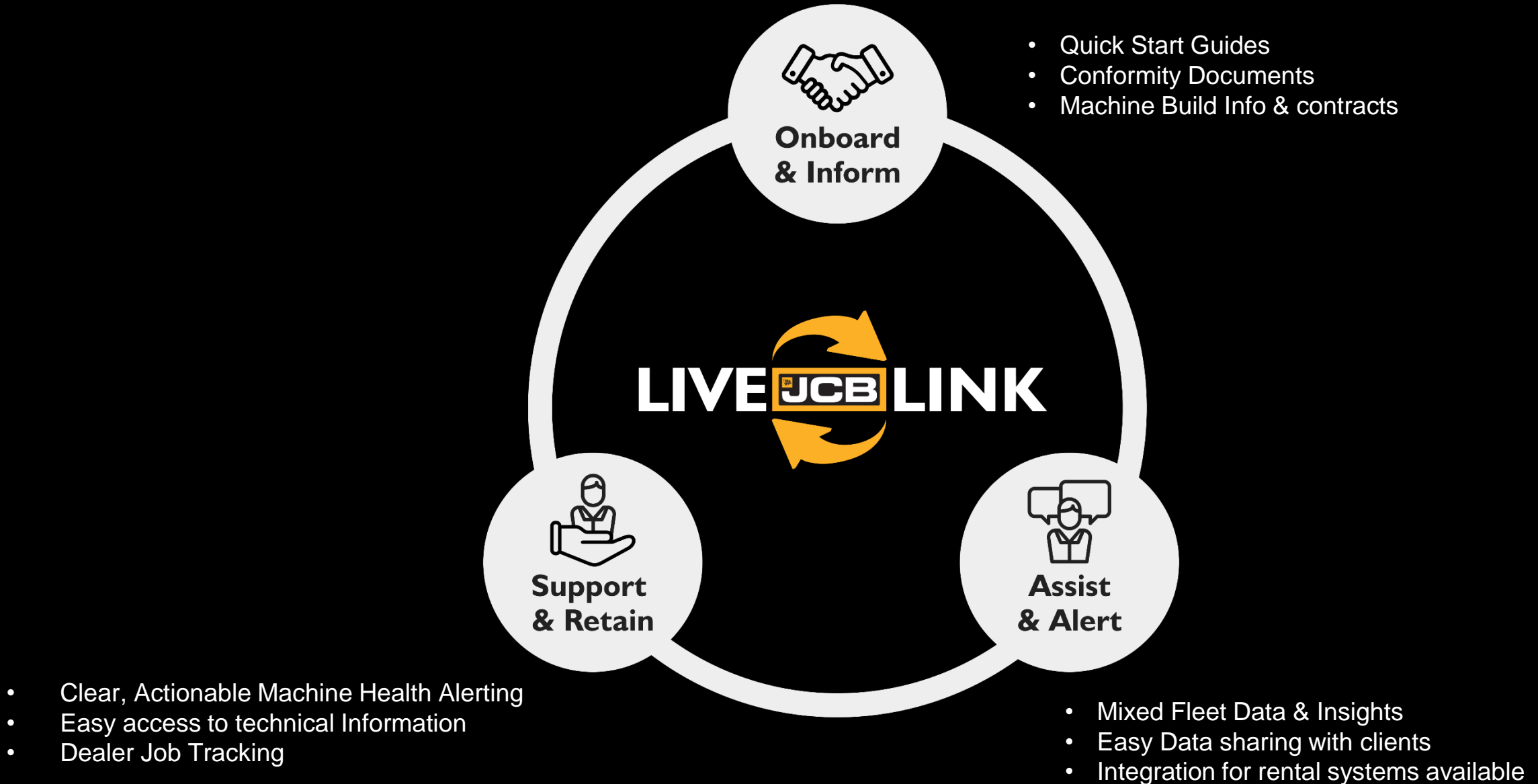


**LIVELINK** now

**CASE - #234567**

UPDATE - Our JCB Engineer GARY has completed the repair on ASSET #234 and marked it as operational. If we can be any further help, please let us know.

# Connecting us to our customers



# Our next generation platform



The image displays a multi-device view of the JCB fleet management platform. The central desktop view shows a map of the United Kingdom with various machine locations marked by red and white pins. A sidebar on the left provides navigation and summary statistics:

- JCB** logo and search bar.
- Navigation menu: Overview, Fleet, Sites, Depots, Operators, Rental, Analytics, Dealer, Settings, Admin.
- Summary: 40 total machines, last refreshed at 16:10.
- Alerts: 33 Actions.
- Health Alerts: 4
- Safety Alerts: 3
- Operator Checks: 1
- Operating Without Check: 25

Two mobile device views are overlaid on the right side:

- Tablet View:** Shows a search bar for "Search asset ID", 5 Health Alerts, and 17 Safety Alerts. The map shows a zoomed-in view of the Midlands region.
- Smartphone View:** Shows a search bar for "Search asset ID", 5 Health Alerts, and 20 Safety Alerts. The map shows a zoomed-in view of the South East region.

At the bottom of the desktop view, there is a "Hybrid view" dropdown menu. The mobile app views also show a "View All" button and a "23 Actions" indicator at the bottom.

# Reporting

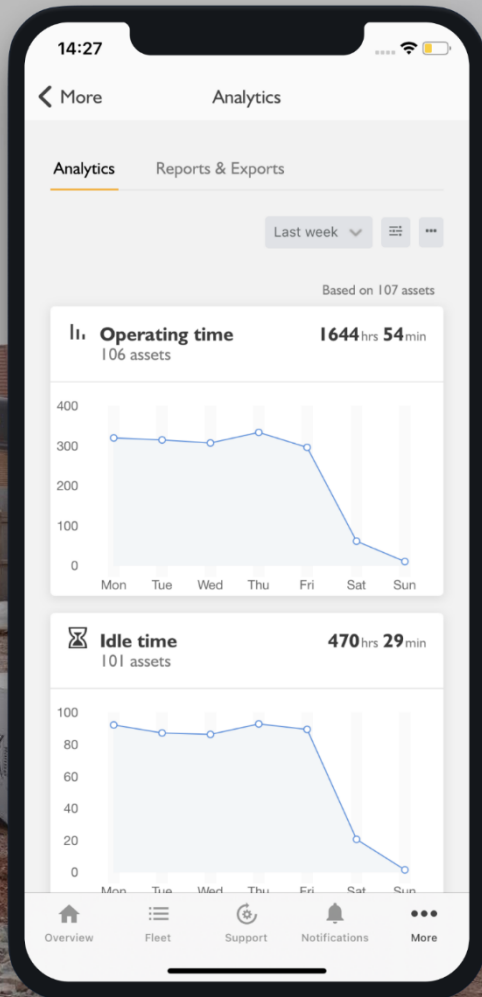


Receive a regular reports with historical data

View live information online and on the LiveLink app

Information given by address or by Region & Site using your own terminology

View all relevant information, not just operation / idling



# Alerting

Real time alerts for things that matter



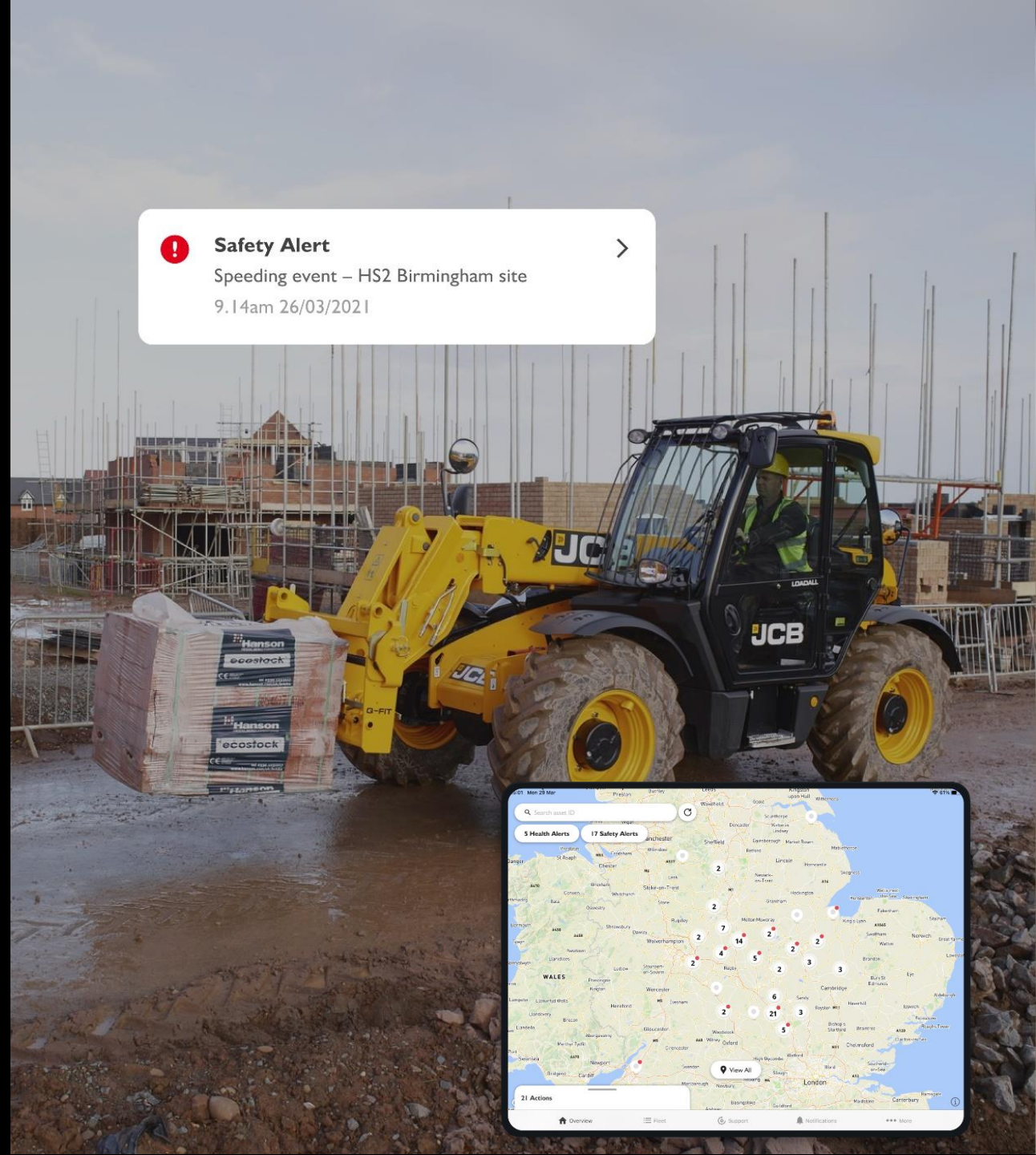
**No Code Without Fault**



**No Alert Without Action**



**No Data Without Insight**



**! Safety Alert** ➔  
Speeding event – HS2 Birmingham site  
9.14am 26/03/2021

5 Health Alerts 17 Safety Alerts

21 Actions

Overview Fleet Support Notifications More



what3words



///mouth.firms.lamppost  
UTTOXETER, UK

///flaked.tint.willpower  
UTTOXETER, UK





## Asset Tracking



- **LiveLink Sentinel**
  - 7 Year Battery Life
  - Secondary Tracking Device
- **LiveLink Beacon**
  - 3 Year Battery Life
  - Primary Asset Tracking Device
  - Reports location multiple times per day



**INCREASE UPTIME – REDUCE ADMIN – MAKE BETTER DECISIONS.**

[JCBLiveLink.com](http://JCBLiveLink.com)

[LiveLinkTeam@jcb.com](mailto:LiveLinkTeam@jcb.com)